



# VANTAGE EKEY INTEGRATION

## *3rd Party Control*



## *Product Overview*

### **Description**

Vantage has developed an integration with Ekey Multi, the extended standalone solution, and Ekey Net, the networkable access solution from Ekey, europe's number one in fingerprint access solutions. Due to this integration you can control your home or building automation with finger scanners and badges. Your home recognizes you, access is granted and alarm, lighting, climate, blinds, audio, and much more, are all controlled and tailored to your individual requirements.

Vantage made the integration in its own office building with Integra RFID finger scanners, wired to Ekey control panels, and integrated on the network, giving the ability to grant employee access through either fingerprints or badges. Access rules are applied based on permissions, user roles, time windows, calendar events, scanner locations, etc, which will launch the appropriate tasks, scenario's and scenes.



Ekey Integra RFID finger scanner

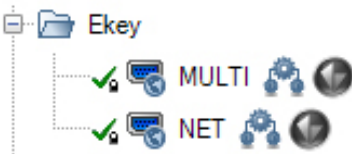
In addition, Vantage also integrated the Ekey net solution in its showroom, located at its European headquarter. Different types of finger scanners are installed which all demonstrate the endless possibilities and advantages of this integration solution within building automation.



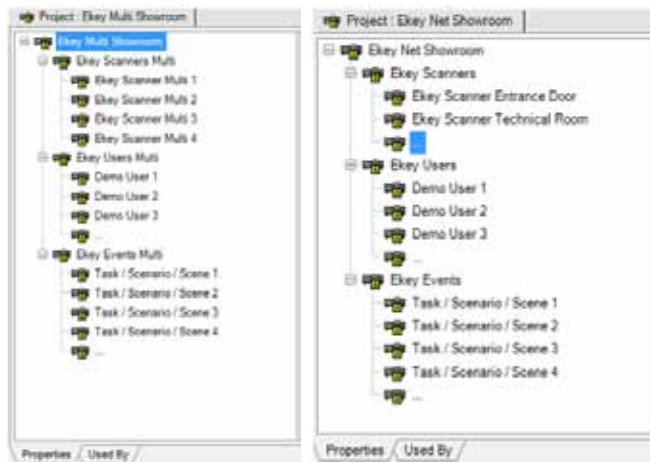
Ekey Outlet Mounted RFID finger scanner

## Operation

To accomplish this integration, Vantage has developed a driver which acts as an interface between Vantage and the Ekey system. This driver is a versatile software bridge between Vantage and Ekey, making it easy to integrate Ekey fingerprint solutions in the Vantage Infusion system. Scans, either with fingers or badges, will be analysed by the Vantage controller and based on the result (access granted or refused) specific tasks or scenes can be launched.



Ekey Multi and Net driver in the Vantage online driver database.



Ekey Multi driver configuration within Design Center (finger scanners, users and events).

Ekey Net driver configuration within Design Center (finger scanners, users and events).

## Product Highlights

### Ekey Multi

- Supports Ekey Multi extended standalone fingerprint access solution
- Supports all Ekey Multi compatible finger scanner models
- Up to 4 finger scanners can be connected to 1 Ekey Multi control panel
- Up to 99 fingers can be stored
- 4 Relay outputs
- Finger scanners can optionally be equipped with RFID
- Simple commissioning and operation
- 3 different time zones
- Access log
- Special operation modes (for holiday and for full access)
- Backup function
- Configurable inputs
- User name identification
- Supports master key plan
- Events, tasks, scenes, access policy managed by Vantage
- Automatic distribution of finger templates to all finger scanners
- No PC required
- Tailored for home automation

### Ekey Net:

- Supports Ekey Net networkable fingerprint access solution
- Supports all Ekey Net compatible finger scanner models
- Up to 80 finger scanners can be managed on a single network
- Up to 2000 fingers per scanner
- Finger scanners can optionally be equipped with RFID
- Users, groups, finger prints, badges, time and access configuration managed by Ekey Net Admin software
- Events, tasks, scenes, access policy managed by Vantage
- Configurable time zones
- Log recording for every finger scanner
- Tailored for commercial building automation

## Specifications

---

### Ekey Multi:

- Vantage controller
- Vantage controller power supply
- Vantage UI (keypad, touchscreen) to control door access from inside
- Vantage relay to lock/unlock door mechanism
- Ekey finger scanner(s)
- Ekey Multi control panel
- Ekey Multi CV LAN
- Ekey power supply
- Power supply unit for door mechanism
- Optional: Power battery pack for door mechanism
- Optional: Emergency button to overrule door access from inside
- Optional: Vantage Contact Input Station to receive hard wired trigger from Ekey control panel

### Ekey Net:

- Vantage controller
- Vantage controller power supply
- Vantage UI (keypad, touchscreen) to control door access from inside
- Vantage relay to lock/unlock door mechanism
- Ekey finger scanner(s)
- Ekey Net control panel(s) (1 per finger scanner)
- Ekey Net CV LAN
- PC that runs Ekey Net Admin software
- Power supply unit for door mechanism
- Optional: Power battery pack for door mechanism
- Optional: Emergency button to overrule door access from inside
- Optional: Vantage Contact Input Station to receive hard wired trigger from Ekey control panel
- Optional: Ekey USB finger scanner to enrol finger scans through software

### Vantage Contact

---

Steve Smet  
contact.vantage@vantage-emea.com  
+32 (0)3 773 31 06  
Binnendijk 40, 9130 Beveren, Belgium