

ekey dLine gateway

**Smart door opening —
Smartphone instead of house keys**

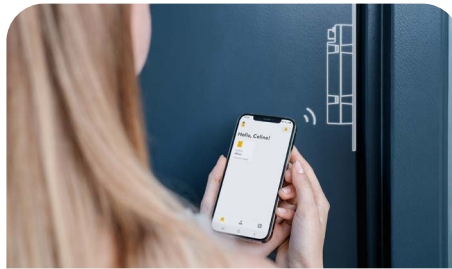
Five reasons to choose an ekey dLine gateway

Open the front door with your smartphone and use smart features: The ekey dLine gateway is installed invisibly in the door leaf directly by the door manufacturer.



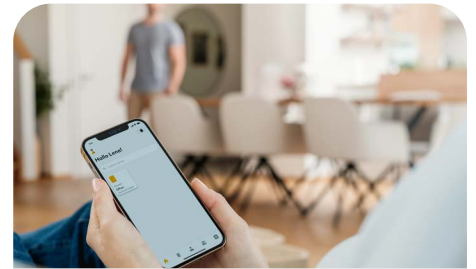
Your smartphone as an intelligent key

Open your door at any time with your smartphone and enjoy additional practical features of your digital key ring.



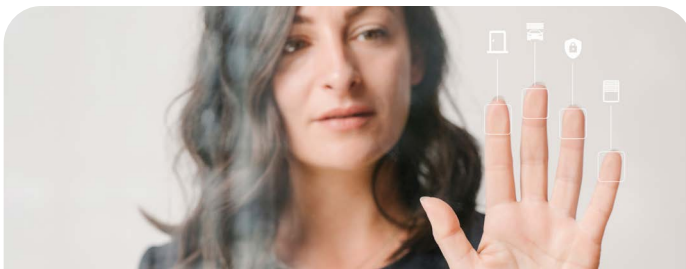
Secure access with your smartphone

ekey guarantees the highest security standards: All data is transmitted in encrypted form.



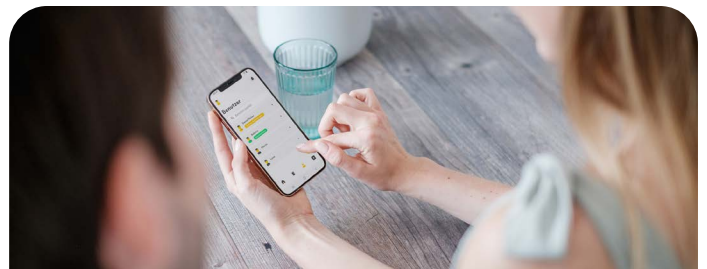
Intuitive user guidance without a manual

Thanks to an intuitive user interface via the ekey bionyx app, you do not need any operating manual.



Benefit from smart home convenience at your front door

In future, you can benefit from numerous smart features in Plus mode, such as remote opening, push notifications, and connectivity to Amazon Alexa or smart home providers such as KNX, Loxone, Somfy, and many more.



Everything in one system

Administer all your ekey devices — whether fingerprint scanner or gateway — conveniently in one system (in one app). This allows you to maintain an overview at all times and benefit from a single user interface.



Advantages for the manufacturer

The ekey dLine gateway makes every front door smart: The door is opened via a smartphone, which serves as a smart digital key fob and offers many additional features. The access control system also offers numerous advantages for you as a manufacturer:

Smart doors at low cost

Affordable entry-level solution for keyless access, e.g., for side entrance doors, plastic doors, apartment entrance doors, sliding doors, etc.

Invisible installation in the door leaf

The door design takes center stage, as the ekey dLine gateway is installed directly in the door leaf.

Motorized lock independence

Consistent, manufacturer-independent solution for all common motorized locks

Identical in construction to the ekey dLine control unit

The use of familiar components minimizes potential sources of error and guarantees process reliability.

A single app for fingerprint scanner and gateway

Easy activation and intuitive user guidance in the ekey bionyx app without additional training

Many practical features

Remote opening, push notifications, or Amazon Alexa connectivity, and various options for smart home connectivity in Plus mode from the end of 2026

Reduced after-sales costs

Benefit from remote diagnostics and automatic updates



Always one step ahead

ekey is future-proof, as ekey continuously develops its software. Regular software updates provide users with free improvements and new features that make everyday life even safer and more convenient. From the end of 2026, the Plus mode will open up additional networking and smart home connectivity options.

Scalable at any time

The ekey dLine gateway for door leaves, the ekey xLine fingerprint scanner for flush-mounting and surface installation, the ekey sLine fingerprint scanner for door stations and mailboxes, and the ekey dLine fingerprint scanner for door handles and door leaves can all be easily combined in the ekey bionyx system. By default, up to 20 devices can be administered in one system.

Cross-location use

It is therefore not necessary to decide in advance what scope the access control system should have. Users, features and devices can be added at a later date. It can also be used at different locations — for example at your main and secondary residence.

Extensive smart home connectivity

More than just opening the door — with ekey, your smart home starts the moment you walk in the door. On the one hand, various smart features stand out directly in the ekey bionyx system, and on the other hand, connectivity to other smart home systems is possible via the ekey bionyx API, HTTP(S) requests, and the APPMODULE from BAB TECHNOLOGIE.

Scope of features

The access control system is activated intuitively via the ekey bionyx app. You can choose between Local mode and Plus mode¹. In Local mode, you can access all basic features in just a few steps, without an internet/WLAN network. These can be extended with the Plus mode. Registration and Internet/WLAN are required for the additional smart features.

Local mode

Without Internet/WLAN

- ✓ **Open the door with a smartphone** near the door
- ✓ **Intuitive administration** via smartphone (e.g., users, devices)
- ✓ **Up to 20 users**
- ✓ **Firmware updates**

Plus mode

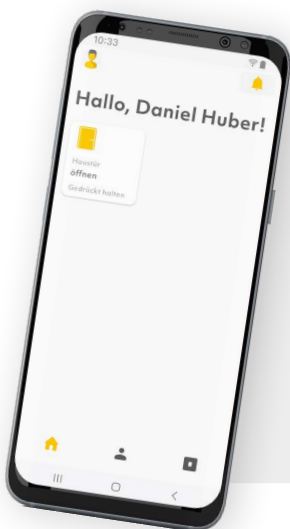
With smart features

- ✓ **All basic features** from the Local mode
- ✓ **Opening the door via a smartphone** is still possible without Internet/WLAN
- ✓ **Remote opening** via smartphone
- ✓ **Push notifications** when the door is opened
- ✓ **Time slots** (e.g., Person X: Access Wednesday, 9 a.m. to 1 p.m.)
- ✓ **Up to 20 devices** (fingerprint scanner or gateway) can be administered centrally in the app
- ✓ **Remote administration** of authorizations
- ✓ **Access log** for 30 days (activate/deactivate and delete)
- ✓ **Amazon Alexa connectivity**
- ✓ **Smart home connectivity** (HTTP(S) requests, APPMODULE, REST API)
- ✓ **Data backup** of the device configuration
- ✓ **Remote support**

Extensions in Plus mode

(subject to charge)

- + **Extendable to up to 100 users**



ekey bionyx app

The ekey gateway system is conveniently administered using the ekey bionyx app: Users, authorizations, access logs and much more at a glance!

You can find all the information at www.ekey.net/en/discover-the-ekey-bionyx-app or simply by scanning the QR code.



¹The Plus mode will be available for the ekey dLine gateway from the end of 2026.



The ekey dLine gateway

Smart door opening

The ekey dLine gateway consists of the following components:

3 ekey dLine gateway + mounting plate

4 ekey dLine control unit-motorized lock cable

Optional component: Required if no cable is supplied with the motorized lock

5 ekey dLine cable transfer

Optional component: Perfectly matched to the system; Only required if no other cable transfer is used.

6 ekey dLine control unit-cable transfer cable

Optional component: Required if no ekey dLine cable transfer is used.

7 ekey power supply

Optional component: Required if no ekey dLine cable transfer is used.

You will find all the system components in the ordering overview on the following pages.

Note

1 + 2 (ekey fingerprint scanner and fingerprint scanner-control unit cable) are not required.

Ordering overview

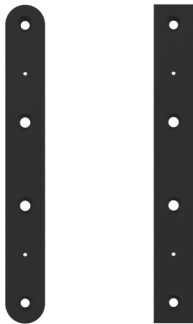
Smart door opening

3 ekey dLine gateway



Part no.	Description
201251	ekey dLine gateway
	Technical data: Dimensions H x W x D: 117 x 16 x 33 mm Supply voltage: 12-24 VDC Power consumption: approx. 0.6 W Temperature resistance from -25 °C to +70 °C IP code: IP30 Number of relays: 1 (dry contact/wet contact) Digital input: 1 (dry contact)

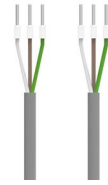
Accessories



Part no.	Description
201215	ekey dLine control unit mounting plate round-cut 16 mm
201211	ekey dLine control unit mounting plate round-cut 20 mm
201212	ekey dLine control unit mounting plate round-cut 24 mm
201216	ekey dLine control unit mounting plate square-cut 16 mm
201213	ekey dLine control unit mounting plate square-cut 20 mm
201214	ekey dLine control unit mounting plate square-cut 24 mm
	Technical data: Dimensions H x W x D: 180 mm x 16 (20/24) x 2.7 mm ABS plastic, textured on one side, black

4 ekey dLine control unit—motorized lock cable

Part no.	Description
201341	ekey dLine control unit-motorized lock cable 0.3 m
201342	ekey dLine control unit-motorized lock cable 3.5 m



Lock-specific cables

Part no.	Description
201354	ekey dLine control unit-motorized lock cable Glutz 3.5 m
201362	ekey dLine control unit-motorized lock cable GU-SECURY Automatic 3.5 m
201358	ekey dLine control unit-motorized lock cable ISEO x1R Smart 3.5 m
201352	ekey dLine control unit-motorized lock cable MACO 3.5 m
201356	ekey dLine control unit-motorized lock cable MSL 3.5 m
201360	ekey dLine control unit-motorized lock cable Winkhaus blueMatic EAV3/4/4+ or blueMotion+ 3.5 m
201359	ekey dLine control unit-motorized lock cable Winkhaus blueMotion 0.5 m

Note

The cables 201341 and 201342 can be used for the motorized locks from KfV (Genius A and Genius B), Roto Eneo, as well as for FUHR (multitronic and autotronic).

Plug-and-play & time-saving:

The ekey dLine cable transfer is pre-assembled, ready to connect, and can be disconnected with just one screw thanks to its patented plug-in system — ideal for quick installation, maintenance, or replacement.

5 ekey dLine cable transfer

8-core cable transfer

Part no.	Description
201401	ekey dLine cable transfer housing 48 cm Technical data: Dimensions H x W x D: 511 x 24 x 17.5 mm Material/surface: steel/chrome Housing: on the door leaf side - Max. opening angle: 180° Type of cable: LiYY, 0.34 mm ² - Number of cores: 8 Cable length: 2.5 m on the frame side with an open end 0.6 m on the door leaf side with a plug for connecting to the control unit



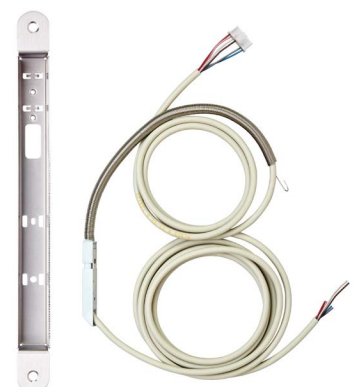
Accessories

Part no.	Description
201411	ekey dLine cable transfer built-in fitting set, timber
201412	ekey dLine cable transfer replacement cable 10 m The standard ekey dLine cable transfer has a 2.5 m long data and power connection cable on the frame side. If this is too short, it can be exchanged for the 10-meter replacement cable.
201413	ekey dLine control unit-cable transfer cable extension 1.0 m Extension cable from the ekey dLine cable transfer to the ekey dLine control unit.



6-core cable transfer

Part no.	Description
201405	ekey dLine cable transfer housing 18 cm Technical data: Dimensions H x W x D: 230 x 20 x 26.5 mm Material/surface: steel/chrome Housing: on the door leaf side - Max. opening angle: 180°
201406	ekey dLine cable transfer without housing Technical data: Max. opening angle: 180° Type of cable: LiF9Y11Y, 0.34 mm ² - Number of cores: 6 Cable length: 2.5 m on the frame side with an open end 1.0 m on the door leaf side with a plug for connecting to the control panel

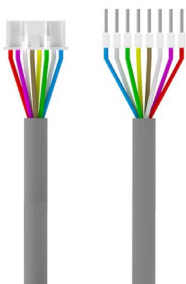




Accessories

Part no.	Description
101586	ekey mounting plate cable transfer round-cut 16 mm, for timber door
101587	ekey mounting plate cable transfer square-cut 16 mm, for plastic or aluminum door
Technical data: Dimensions H x W x D: 126 x 16 x 3 mm	

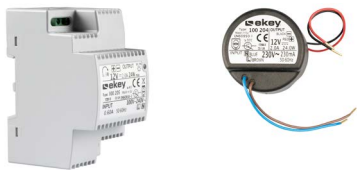
6 ekey dLine control unit-cable transfer cable



Part no.	Description
201331	ekey dLine control unit-cable transfer cable 0.5 m
201334	ekey dLine control unit-cable transfer cable 1.2 m
201332	ekey dLine control unit-cable transfer cable 3.0 m
201333	ekey dLine control unit-cable transfer cable 8.0 m
201337	ekey dLine control unit-cable transfer cable GU connect 50 0.6 m
201338	ekey dLine control unit-cable transfer cable GU connect 200 0.6 m
This plug-and-play data and power cable connects the control unit to the cable transfer from various manufacturers.	

7 Power supplies & UPS

Power supplies



Note

Select the power supply based on the properties of the motorized lock.

Part no.	Description
100205	ekey power supply DRM 230 VAC/12 VDC/2 A
100891	ekey power supply DRM 230 VAC/24 VDC/2 A
100204	ekey power supply outlet-mounted 230 VAC/12 VDC/2 A
101742	ekey power supply outlet-mounted 230 VAC/24 VDC/1.1 A

Uninterruptible power supply (UPS)



Part no.	Description
101559	UPS rail-mounted 230 VAC/12 VDC/5 A + rechargeable battery 4 Ah; 6HP + 9HP
2 parts: UPS (switched-mode power supply) and rechargeable battery Output voltage/current: 12 VDC/5 A	
101593	UPS rail-mounted 230 VAC/24 VDC/3 A + rechargeable battery 4 Ah; 6HP + 9HP + 9HP
3 parts: UPS (switched-mode power supply) and 2x rechargeable battery Output voltage/current: 24 VDC/3 A	
The uninterruptible power supply secures the power supply of the ekey devices in the event of a power failure. The UPS replaces the power supply. Suitable for use in conjunction with a motorized lock.	
Technical data: Dimensions H x W x D: UPS: 94 x 108 x 95 mm (6HP) Rechargeable battery: 93 x 157 x 66.5 mm (9HP) Supply voltage: 100-240 VAC Temperature resistance from -10 °C to +40 °C	

Documents

You can download all technical documents for the ekey dLine gateway by scanning the QR codes or by clicking on the links.



Wiring diagrams

www.ekey.net/en/download-center/?anwendung=ekey-dline-en



Mounting instructions

www.ekey.net/en/download-center/?anwendung=ekey-dline-en



Customer trainings

www.ekey.net/en/ekey-academy/ekey-academy-for-the-fittings-industry



FAQs about the ekey bionyx system

www.ekey.net/en/faq-about-the-ekey-bionyx-system



Data sheets

www.ekey.net/en/data-sheets





Designed, developed
and made in Austria.

Austria (headquarters)

ekey biometric systems GmbH
Lunzerstraße 89
A-4030 Linz
T: +43 732 890 500 - 0
E: office@ekey.net

Adriatic East region

ekey biometric systems d.o.o.
Vodovodna cesta 99
SI-1000 Ljubljana
T: +386 1 530 94 89
E: info@ekey.si

Germany

ekey biometric systems
Deutschland GmbH
Industriestraße 10
D-61118 Bad Vilbel
T: +49 6187 906 96 - 0
E: office@ekey.net

Italy

ekey biometric systems Srl.
Via Perathoner 31
I-39100 Bolzano
T: +39 0471 922 712
E: italia@ekey.net

Switzerland & Liechtenstein

ekey biometric systems Schweiz AG
Schaanerstrasse 13
FL-9490 Vaduz
T: +41 71 560 54 80
E: office@ekey.ch

