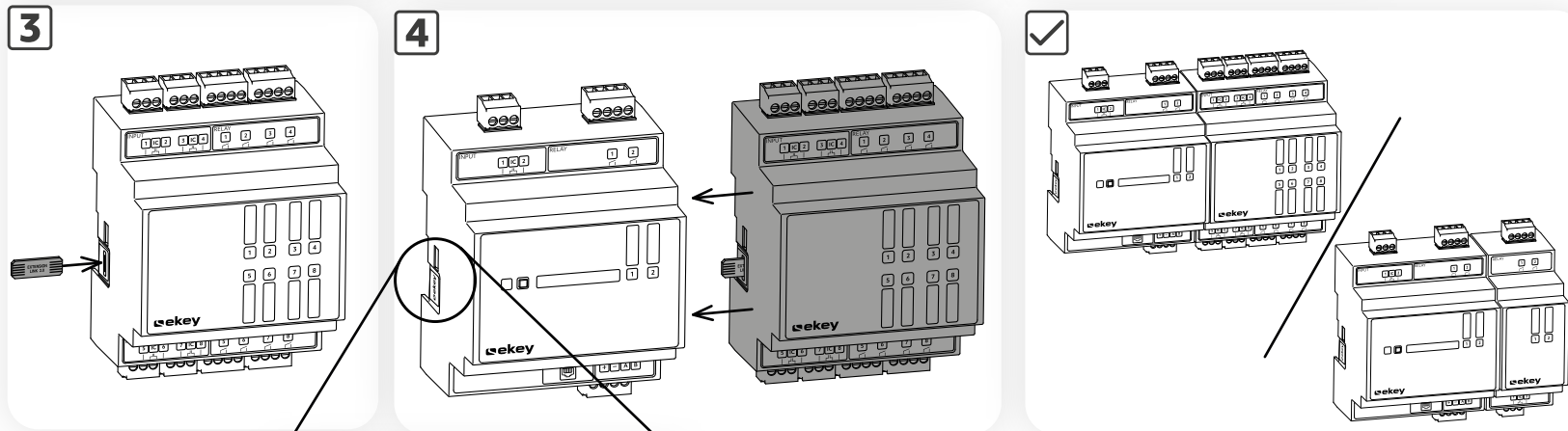
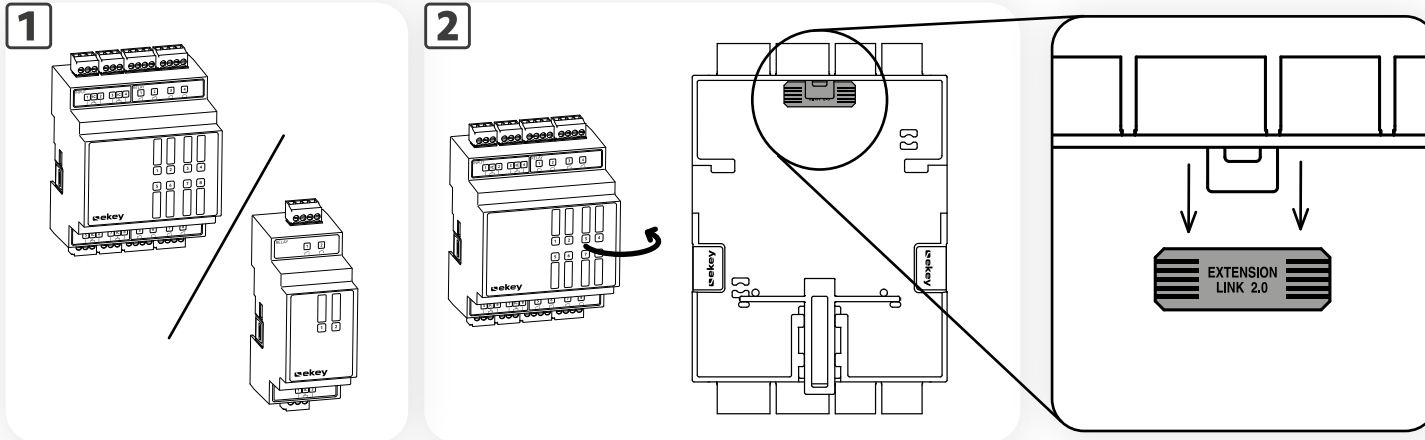
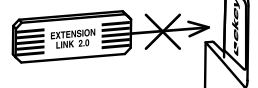


# Mounting instructions ekey control unit extension module DRM

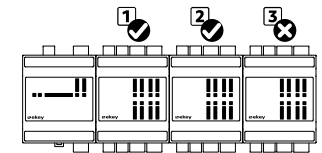


**⚠ DO NOT** plug the EXTENSION LINK into the left side of the ekey control unit DRM!



## ⚠ ATTENTION

Disconnect the ekey bionyx system from the power supply before plugging in control unit extension modules. Connect a maximum of two control unit extension modules DRM to the ekey control unit DRM.



## ⚠ ATTENTION

**Property damage in the event of incorrect mounting and wiring:** The system devices are operated using electricity. They could be destroyed, e.g. by water ingress, if they are mounted and wired incorrectly. Mount and wire the system devices correctly before connecting the power.

## 📄 NOTICE

These mounting instructions are not subject to updating. We reserve the right to make technical modifications and change the product's appearance; any liability for errors and misprints is excluded.