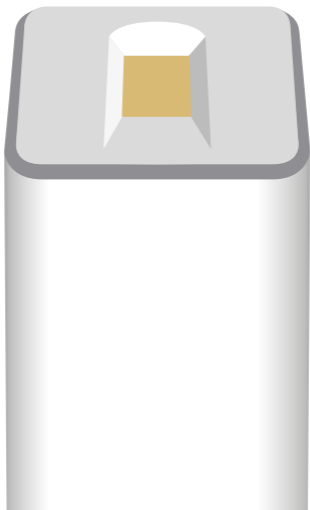




rechargeable fingerprint
scanner, wireless

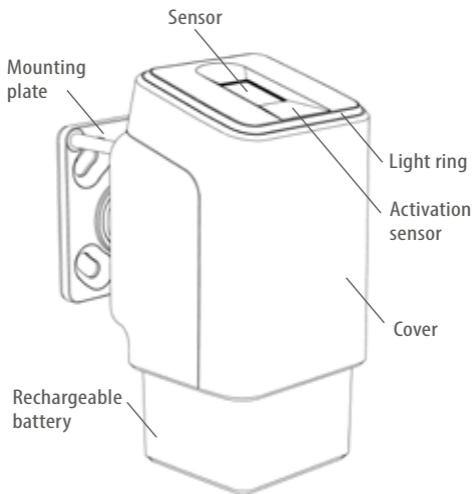
Quick Start Guide



Battery-operated variant

Scope of delivery

- ekey uno
- Rechargeable battery
- Torx screwdriver
- Charger
- Bottom cap
- Safety screw
- Screws for fastening the ekey uno to the mounting plate
- Screw anchors and screws for fastening the mounting plate to the wall (screw variant)



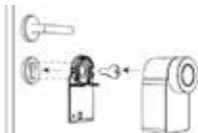
Observe the enclosed Safety information.

Battery-operated variant

1 Activate the Nuki Smart Lock

Follow the operating instructions for the Nuki Smart Lock and mount it on the door lock on the inside of the door

NUKI



2 Fully charge the ekey uno battery

Charging time max. 5 hours

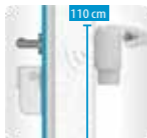
- Battery is charging
- Battery is fully charged



! You can only activate the system successfully with a fully charged battery.

3 Define the position for the ekey uno

Determine a suitable position outside for your ekey uno before you start mounting it. Right next to the door, for example. It is **IMPORTANT** to note:



- ! The device must be easy to reach with one's hand.
- ! The installation height of **at least 110 cm** is important for ergonomically correct operation and must therefore be observed.
- ! The ekey uno communicates wirelessly with the door lock actuator. Both devices must therefore be installed in close proximity* to one another.

*According to the BLUETOOTH® technology standard, the typical range is 10 m. However, this can be lower, depending on the installation situation and the type of door.

4 Attach the mounting plate - **minimum height 110 cm**

Glue variant*

OR

Screw variant



An adhesive foil is already attached to the mounting plate. Remove the base foil and adhere the mounting plate.



Attach the mounting plate in the previously selected mounting position. You can glue on the mounting plate or fix it with the supplied screw anchors and screws.

❗ *NOTE ON THE GLUE VARIANT:

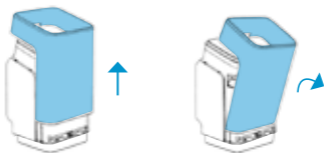
Remove the entire base foil. Thoroughly clean the surface where the device is to be mounted. Adhere the mounting plate only to a smooth, dry surface at room temperature. Apply a **large amount of pressure** to the surface to adhere the mounting plate. The bond only reaches maximum adhesive strength after 3 days. Only then can the mounting plate be fully loaded.

❗ For further information, visit:

www.ekey-uno.net/en/faq-find-the-right-answer-to-your-question-quickly/.

5 Remove the cover from the ekey uno

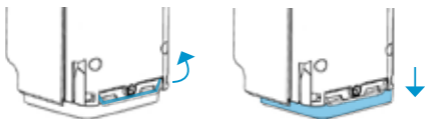
Slide up and tilt to one side



6 Fasten the ekey uno to the mounting plate using the screws provided



7 Open the metal clamp and remove the bottom cap



8 Insert the rechargeable battery and close the metal clamp

Make sure the battery is **fully** charged before inserting it



OPTIONAL:

Attach the safety screw to fix the rechargeable battery and protect it against manipulation

9 Attach cover

Apply at an angle, tilt towards the middle and slide down



ekey uno app

10 Download the app

You need the **free** ekey uno app for mobile devices to activate your ekey uno with the Nuki Smart Lock and for user administration.



ekey uno



Nuki Smart Lock

www.ekey-uno.net

You can find all the information about your ekey uno retrofitting set (functions of the app, videos on activation, etc.) on our website www.ekey-uno.net.

Apple and the Apple logo are trademarks of Apple Inc., registered in the U.S. and other countries. Google Play and the Google Play logo are trademarks of Google LLC.

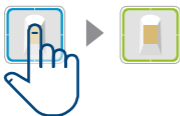
Operating the ekey uno



Your device is equipped with an activation sensor to enable the long rechargeable battery life of approx. 6 months. The activation sensor is shown here with a blue symbol. When operating the ekey uno, always ensure that you touch the activation sensor. Otherwise the device remains disabled.

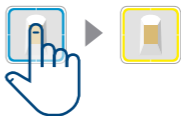
Important signals

Open



Place finger on sensor, wait until LEDs flash blue. As soon as the LEDs flash blue, remove your finger.

Close



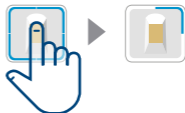
Place finger on sensor, wait until LEDs flash blue. Place finger on sensor again while LEDs are flashing.

Critical battery level



Flashing red

Connect ekey uno with mobile device



Place finger on sensor until top right segment flashes.

Additional signals can be found in the FAQ area

www.ekey-uno.net

ID350/734/0/684:
Version 2, 2020-08-12



Copyright © 2020 ekey biometric systems GmbH.
All content, artwork and ideas contained in this Quick Start Guide are subject to applicable copyright laws. Any transmission, relinquishment or transfer of this content or parts thereof to third parties requires the prior written consent of ekey biometric systems GmbH. Translation of the original documentation.