

ekey Bionyx Crestron Integration + Demo App

Manufacturer: ekey Biometric Systems

Model: Bionyx compatible FW: v5.2

Device Type: Finger Scanner

Developer: amavroth@hotmail.com

GENERAL INFORMATION

SIMPLWINDOWS NAME:	BionyxEngine
CATEGORY:	Security
VERSION:	V1.0
SUMMARY:	Customizable Door Entry + Scan Fail events
GENERAL NOTES:	Requires licenses. Operates for 2 hours after each program loading/compilation, for development purposes.
CRESTRON HARDWARE REQUIRED:	4-Series
SETUP OF CRESTRON HARDWARE:	N/A
VENDOR FIRMWARE:	v5.2

CONTROL:

Init	D	Initialize Engine, can be connected to 1
UI_xxx		Contain UI edit signals connected to Smart Objects and Buttons, according to provided Demo App.

FEEDBACK:

Init_fb	D	Engine has initialized
UI_xxx		Contain UI edit signals connected to Smart Objects and Buttons, according to provided Demo App.
Scene_Calls		
Scene_os	A	House scene number trigger for 1 Logic Wave
Scene001-100_os	D	Digital House scene trigger

PARAMETERS:

EngineId	A	Unique number. Normally 1 Engine per project.
TokenId	S	Same as in bionyx integration token (see bionyx setup section)
License	S	16 chars license provided by ekey office@ekey.net
MaxFailScans	A	Number of consecutive failed scans for triggering related scene.
Scene001-100Name	S	User Friendly House Scene names for UI.

Releases

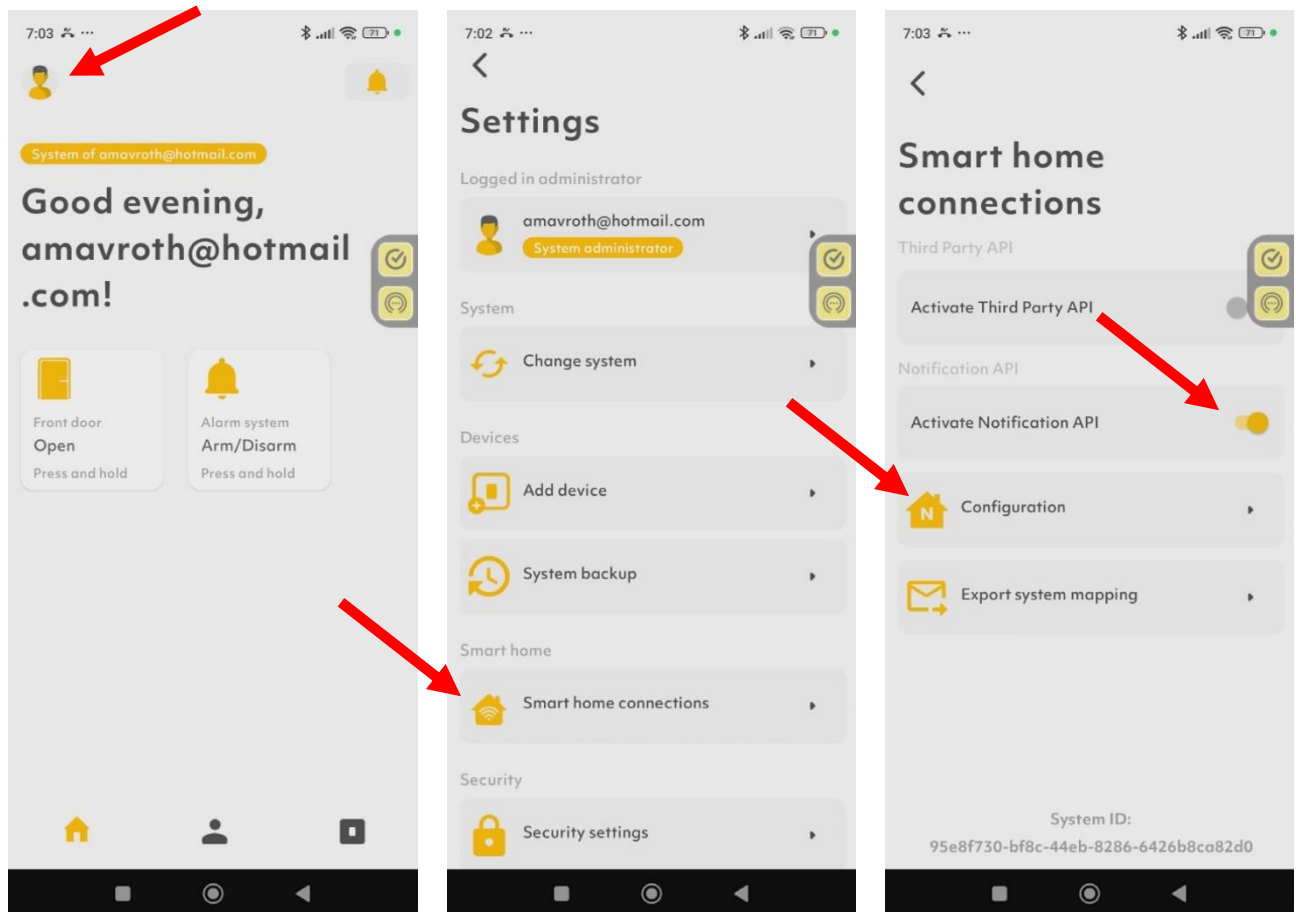
V1.0

- Official initial release

ekey bionyx Configuration



Following the Crestron Home setup, we have to login on the smartphone account(s) that the ekey controllers are registered, in order to connect them to Crestron home's bionyx gateway driver.



1. Select User Settings
2. Smart home connections
3. Activate Notification API should be ON.
4. Select Configuration

5. Set URL to Crestron Home's controller IP, keeping all other routings as displayed. eg. for 192.168.76.33 IP, we should enter: <https://192.168.76.33/cws/ekeyX>
6. Set Level of security to TlsAllowSelfSigned
7. Set Access token to a secret value, that will be the same as Token ID in Crestron Home controller, bionyx gateway configuration.

The screenshot shows a mobile application interface for configuring a webhook. The screen is titled "Configuration" and has a back arrow at the top left. The status bar at the top shows the time as 7:03 and various connectivity icons. The configuration fields are as follows:

- URL:** The field contains the text "https://192.168.76.33/cws/ekeyX". A red arrow points to this field.
- Timeout:** A slider control is set to "6s".
- Level of security:** The field contains the text "TlsAllowSelfSigned". A red arrow points to this field.
- Authentication:** The field contains the text "Access token". A red arrow points to this field.
- Access token:** The field contains a series of asterisks "*****".
- Expires in (s):** The field contains the number "0".

On the right side of the screen, there are two yellow circular icons: a checkmark and a refresh symbol.

Demo App UI

Main Page



Main Settings

Select Door

House Functions

Scanner Entry

Scanner Pool

Edit Scenes

Alarm Off

Silent Alarm

Edit Users

Add User

AP01
Mar 07, 25 23:12:04

Select Door

You can select the House Functions or one of the connected doors (added with BionyxScanner modules), for setting up the available scenes rules.

Edit Scenes

Once House Functions or a Scanner is selected, the User Friendly names of the related Scenes are displayed. Press to go to the Edit Rules Page.

Edit Users

Users are added automatically, when a successful scan is performed on the connected bionyx application. We can also add a user manually by pressing Add User, or correct an existing user name, by selecting it.

The best strategy for adding a new user, is to perform a finger scan so its automatically added to the system, and then correct its name.



House House->Alarm Off Settings

Add Rule

APO1/pXpy5XNc Mar 07,
25 23:12:04

Edit Rule

*
LL,LR,LI,LT,RT,RI,RR,RL

Once a scene is selected, you can select either a general rule (*) or an existing user rule to be added for triggering the scene.

In our example, any finger of any user, except Left Middle (LM) and Right Middle (RM), will trigger the Alarm Off scene.

You can edit or delete the existing rules by selecting them on the right pane, or add an available rule from the left pane. Once an existing rule is deleted, it will become again available on the left pane for selection.

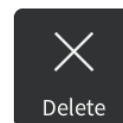
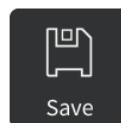
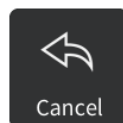
Edit Rule Page



Edit Rule House House->Alarm Off->* LL,LR,LI,LT,RT,RI,RR,F

	Left	Right
Thumb	<input checked="" type="checkbox"/>	<input checked="" type="checkbox"/>
Index	<input checked="" type="checkbox"/>	<input checked="" type="checkbox"/>
Middle	<input type="checkbox"/>	<input type="checkbox"/>
Ring	<input checked="" type="checkbox"/>	<input checked="" type="checkbox"/>
Little	<input checked="" type="checkbox"/>	<input checked="" type="checkbox"/>

All Fingers ☐



From this page we can select which fingers are included in the rule, or delete the rule.



Edit User

User ID: pXpy5XNc

Name:

Created: Mar 07, 25 23:12:04



Cancel



Save



Delete

For existing users, we can change their name or delete them from the system.

For adding a new one, we have to know the exact Bionyx user id. It is recommended to add a user automatically with a finger scan, and then correct the name, as it will avoid mistakes on the user id.