



ekey fingerprint scanner door handles

Solutions for industry + trade



” *After hundreds of years of service, the key has served its time – now you literally have the future in your hands!* “

per

Dr. Leopold Gallner
CEO, ekey biometric systems GmbH



Turn your house into a truly smart home with ekey

A fingerprint scanner system combines design, convenience, and security.

Good reasons to choose an ekey fingerprint scanner:



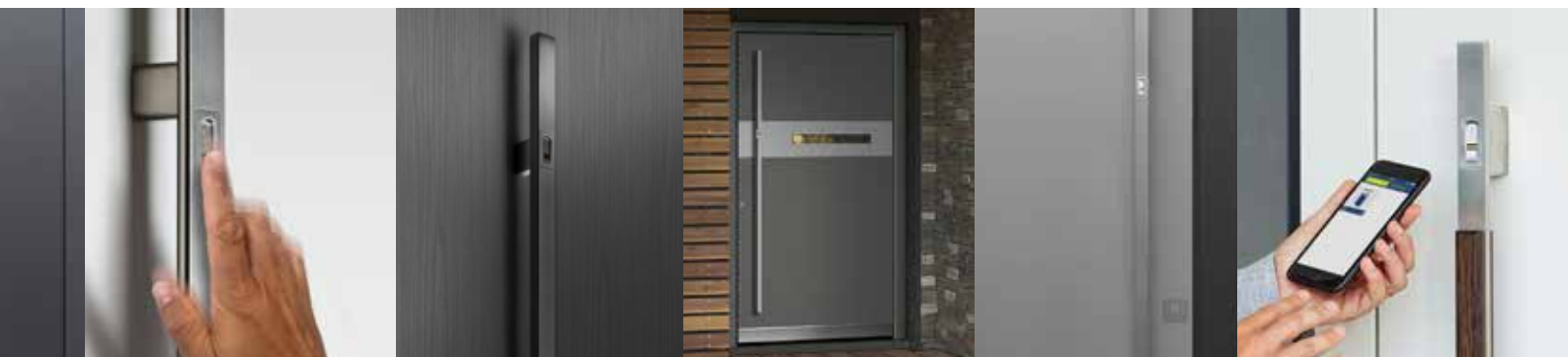
UNRIVALED CONVENIENCE

Impossible to lock yourself out, as your finger is always on hand!



MAXIMUM SECURITY

- No lost or stolen keys!
- Maximum protection against forgery thanks to live finger detection with RF sensor technology!
- Impossible for access authorization to be passed on (with a card, code, or key, for example)!
- 1,000 times more secure than a 4-digit code!



USER-FRIENDLY

Easy installation and administration!



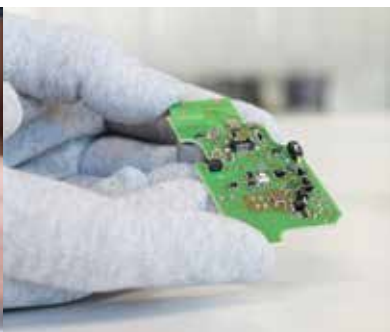
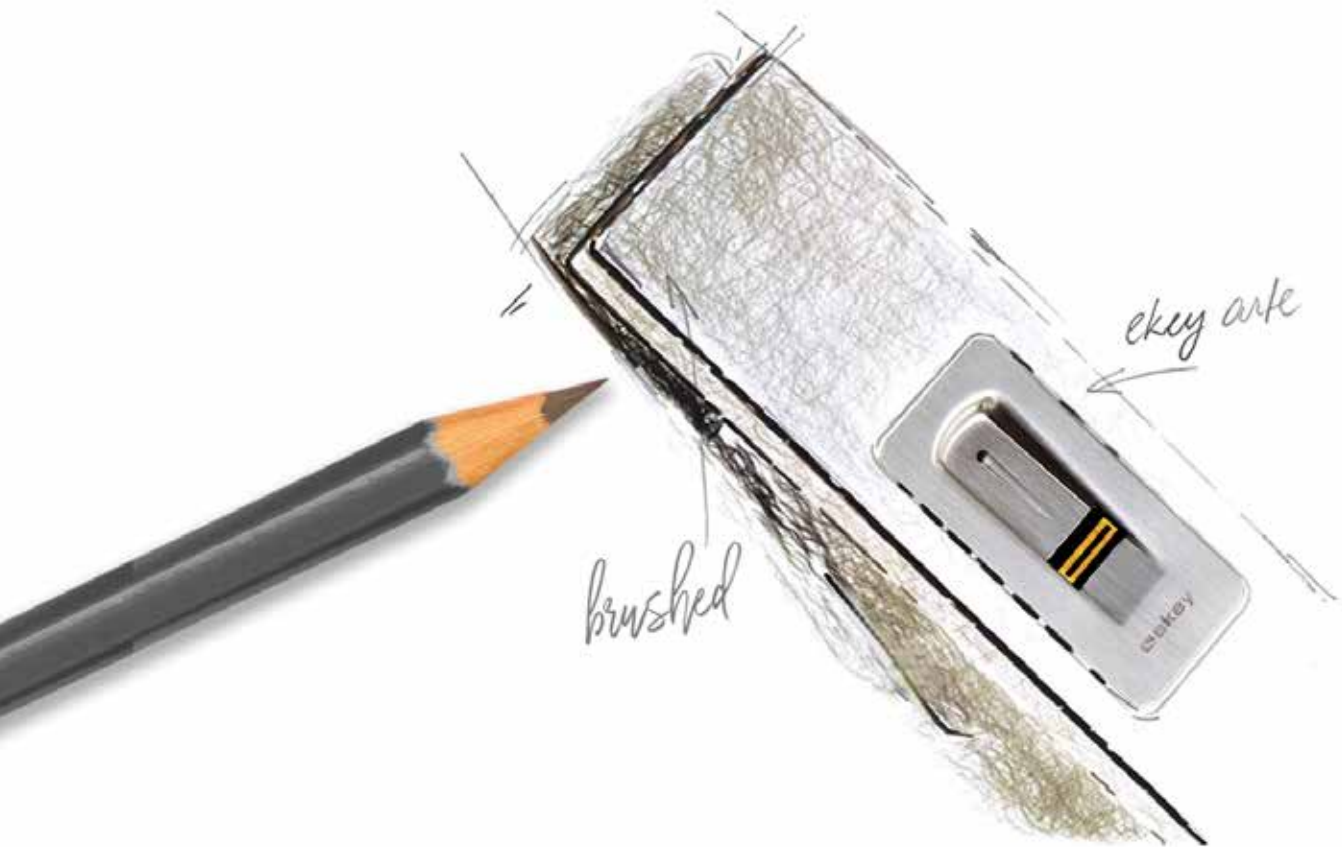
INTELLIGENT SOFTWARE

The ekey software is constantly learning – it can detect the growth of children's fingers as well as minor injuries and changes to users' habits.



5-YEAR QUALITY GUARANTEE

For all ekey products!



ekey
Because innovation is paramount!

Europe's No. 1 for fingerprint access solutions

As a manufacturer and developer, ekey covers the whole spectrum.

More than one million satisfied customers are the best possible recommendation for our products! Both private households and leading companies, along with organizations such as fire and rescue services, have been putting their trust in the ekey fingerprint scanner for many years.



ekey was founded in 2002 and is now Europe's No. 1 for fingerprint access solutions. ekey puts authorization into the customer's hands! Keys, cards, codes, etc. can be lost, forgotten, or stolen. "Your finger is always on hand!" ekey's wide range of products includes access solutions for doors, gates, alarm systems, and time recording.

The international company currently has over 90 employees at its 5 locations in Austria, Germany, Liechtenstein/Switzerland, Italy, and Slovenia, and exports its products to over 70 countries, which makes up 73% of its business. ekey's main sales markets include Spain and the USA, in addition to Austria, Germany, Switzerland, Slovenia, and Italy.

QUALITY

All ekey products undergo a rigorous endurance test before they reach the market. The test involves intensive simulations of blazing heat, biting cold, and high humidity; each fingerprint scanner, along with all of its components, is subjected to these conditions countless times before reaching the customer.

Our formula for quality consists of the highest standards of functionality, reliability, and security, which are refined through extensive testing.

Quality-tested products from ekey – you can count on us!

CERTIFIED QUALITY MADE IN AUSTRIA:



- Extensive production, manufacturing, and functional testing (zero tolerance)
- Testing for environmental and temperature resistance
- Vibration and shock-tested
- Tested for penetration of water and mechanical parts
- Quality management system in accordance with EN ISO 9001:2015
- CE-compliant

So many possibilities

ekey solutions couldn't be easier to use.

VERSATILITY

Plastic, aluminum, or timber –
ekey is the perfect match for all doors and materials.

EASY INSTALLATION

ekey fingerprint scanner systems are designed
to ensure quick and easy installation.

PLUG & PLAY SYSTEM

Plug-in wiring solution for all major
lock manufacturers and cable transfers.

SIMPLE MAINTENANCE

Optimal positioning of the elements
ensures easy accessibility.



App instruction
video



Mounting
instructions



Quick Check



ekey home app

get connected.

USER ADMINISTRATION

- Easy to create, manage, and delete users
- Enable or disable users at the touch of a button
- Assign authorizations for defined access
- Store fingers via the app
- Easy administration of up to 99 fingerprints

ACCESS

- Open doors via app (smartphone/tablet)
- Assign access authorization with a user code
- Provide temporary access (while on vacation, for example)

SECURITY

- Administrator and user level
- 4 to 6-digit app security code
- Enhanced security thanks to 6-digit coupling code
- Administrator is able to change and administer security codes
- Deactivate the fingerprint scanner's Bluetooth function

USEFUL TOOLS

- Adjustable LED brightness on the fingerprint scanner
- Relay switching durations can be set individually
- Reset the system to default settings

The ekey home app is only compatible with the ekey home – single-point access solutions system!



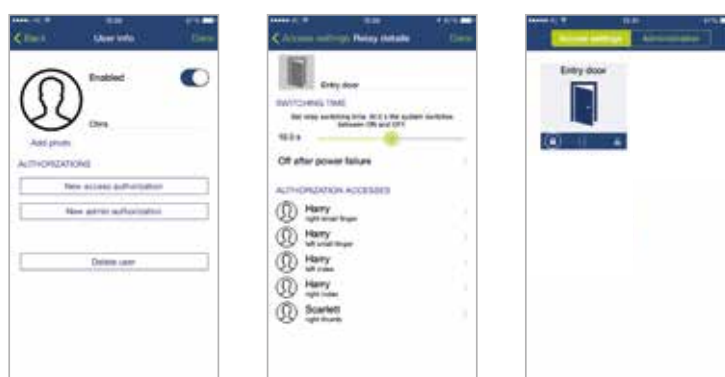
**FREE for
ANDROID and iOS**

Available languages:

DE | EN | IT | FR
ES | CS | PL | RU | ZH



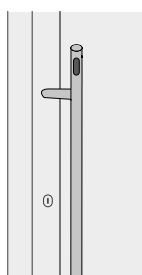
ekey home app – fool-proof menu navigation:



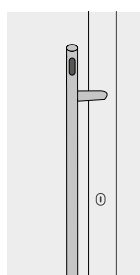


The elbowed door handles can be mounted on the door frame. The door panel can therefore be left untouched.

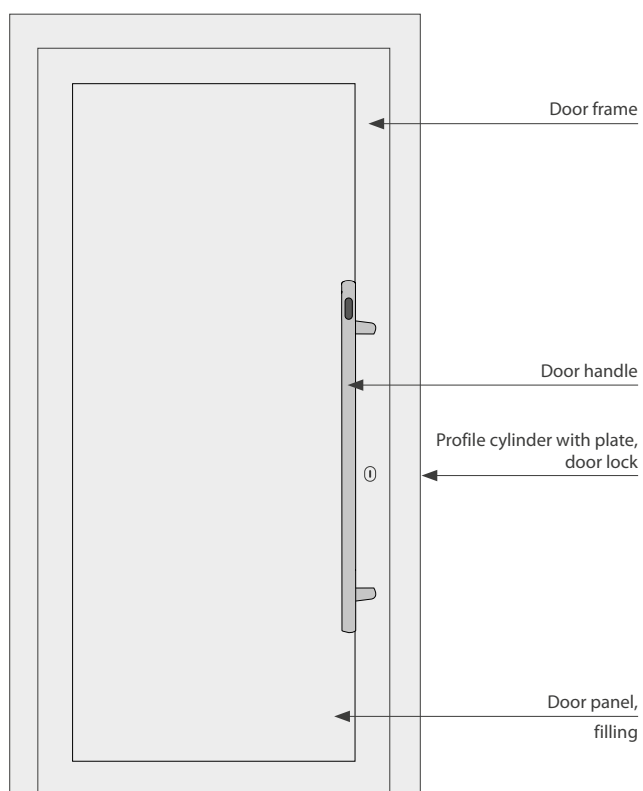
The elbow orientation to the left or right depends on which side of the door the handle is mounted on.



Elbowed door handle, left



Elbowed door handle, right



Door handle varieties for every application

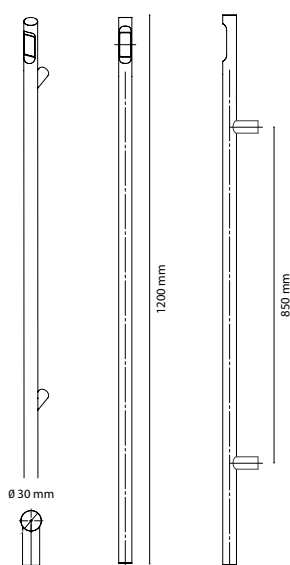
Flexible installation options to meet your needs.



- FAR: 1:10.000.000 / FRR: 1:100
- Power consumption: approx. 1 W
- Supply voltage via control panel: 12-24 V
- IP code: IP54

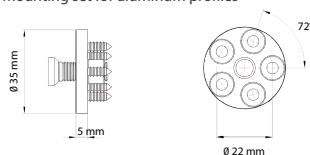
- Recommended FS arte mounting height: 155 cm
- 99 fingers can be stored, tamper-proof, data is retained in the event of a power failure
- Temperature range: -25 °C to 70 °C

Round pull bar

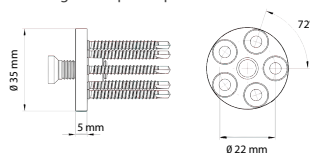


Mounting sets

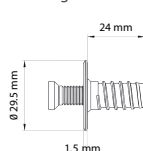
Mounting set for aluminum profiles



Mounting set for plastic profiles



Mounting set for timber profiles



Technical details

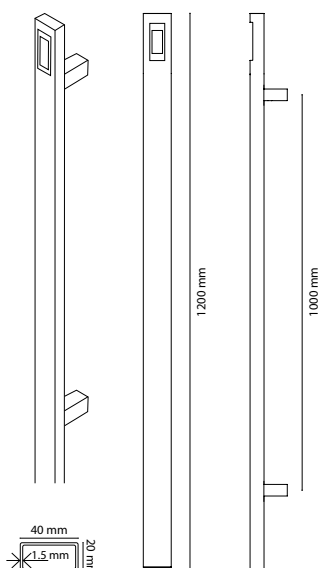


Material:
V4A (AISI 316)

The round handle type is available in three different variants:

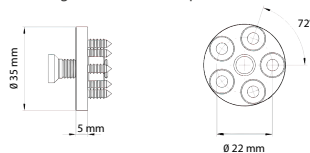
- straight
- 45° elbowed, right
- 45° elbowed, left

Rectangular pull bar

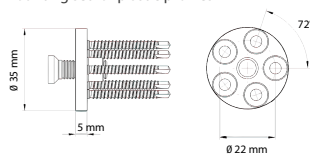


Mounting sets

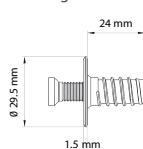
Mounting set for aluminum profiles



Mounting set for plastic profiles



Mounting set for timber profiles



Technical details



Material:
V4A (AISI 316)

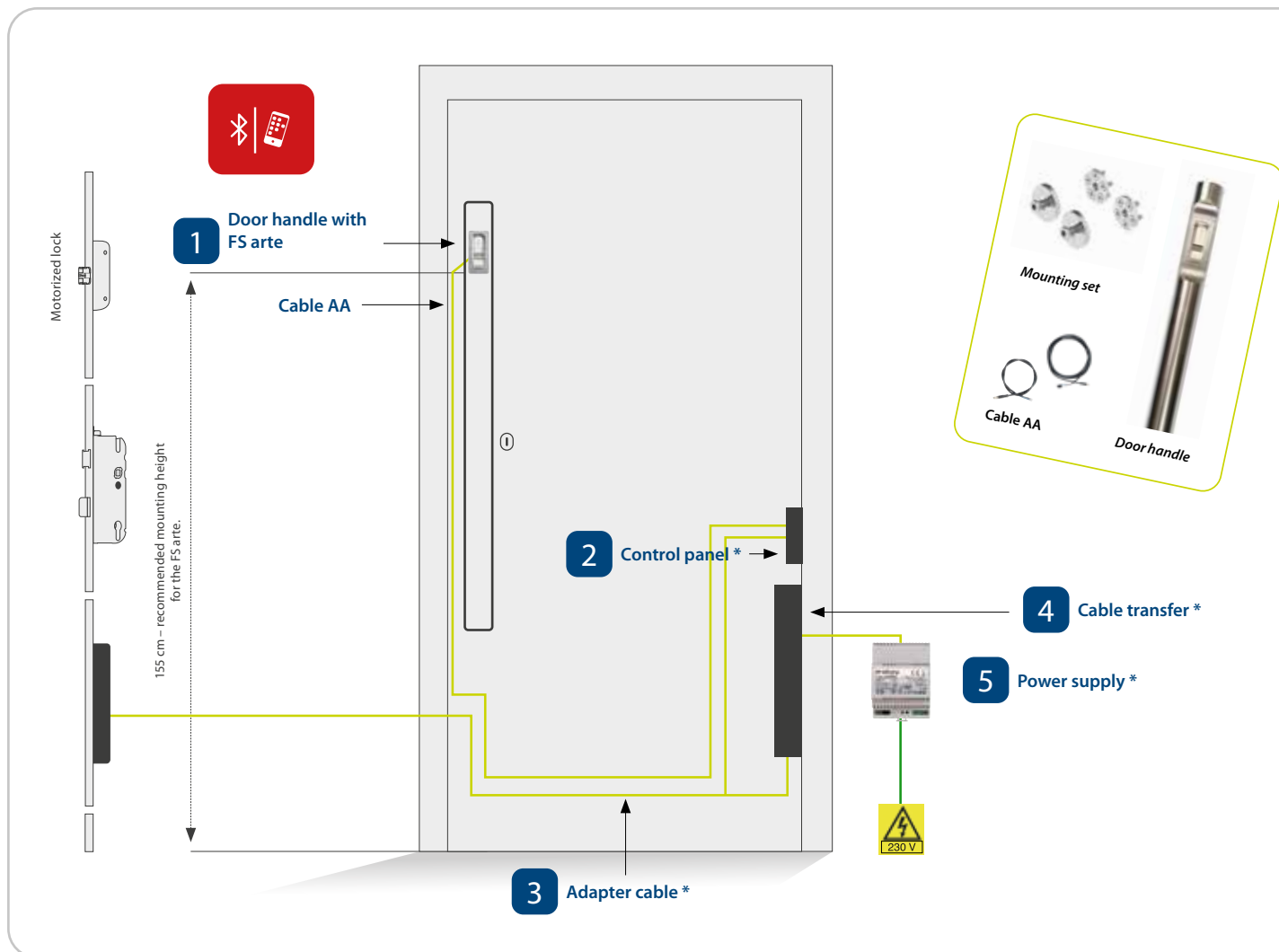
The rectangular handle type ("4-sided") is available in three different variants:

- straight
- 45° elbowed, right
- 45° elbowed, left



Finger scanner arte in the door handle

Simple design for discreet integration.



1

Door handle with finger scanner arte incl. separable cable AA (3.5 m + 1.2 m) + mounting set



Part no.	Description	Additional information
102107	ekey door handle FS AR P10 Ø30 St 1200	Round, Ø30 mm x 1200 mm, straight
102108	ekey door handle FS AR P45 Ø30 LE 1200	Round, Ø30 mm x 1200 mm, elbowed 45°, left
102109	ekey door handle FS AR P45 Ø30 RI 1200	Round, Ø30 mm x 1200 mm, elbowed 45°, right
102110	ekey door handle FS AR Q10 4S St 1200	4-sided, 40 x 20 mm x 1200 mm, straight
102111	ekey door handle FS AR Q45RX 4S LE 1200	4-sided, 40 x 20 mm x 1200 mm, elbowed 45°, left
102112	ekey door handle FS AR Q45RX 4S RI 1200	4-sided, 40 x 20 mm x 1200 mm, elbowed 45°, right

*Control panel (2), adapter cable (3), cable transfer (4), power supply (5) are not included and must be ordered separately.

2

Control panel

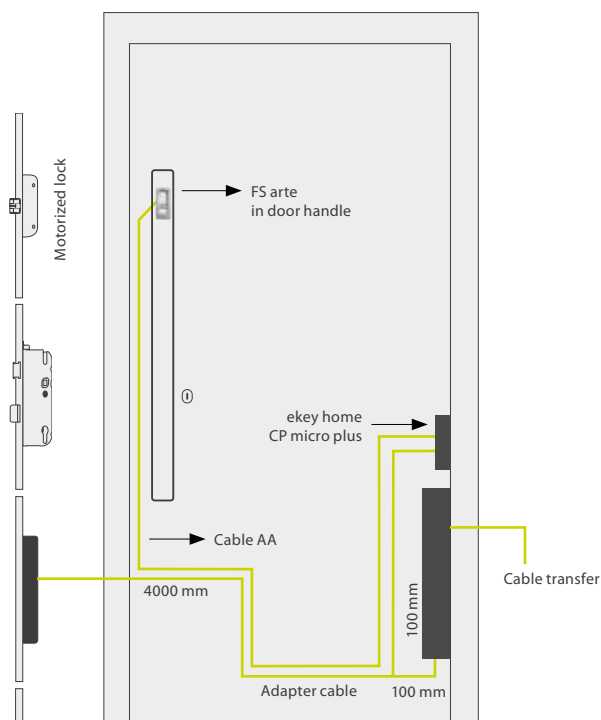


Part no.	Description	
101837	ekey home CP micro plus 1, 1 relay	
	<ul style="list-style-type: none"> • Dimensions W x H x D: 18 x 120 x 26 mm • Power consumption: approx. 1 W • Supply voltage: 12-24 VDC • Temperature range: -20 °C to 70 °C • IP code: IP30 • Relays: 1 output (NO) • RS-485-termination: fixed • Reset button on the control panel • Plug-in connections (CP35) 	<ul style="list-style-type: none"> • Max. relay voltage, max. relay current: 42 VAC/DC/2 A • 1 digital input for request-to-exit button (can also be used to reset to default settings) • Operation only with <i>finger scanner arte</i> • Operation: via app or administrator finger • Tamper-proof due to encrypted communication between the ekey finger scanner arte and the ekey home control panel micro plus.
	ekey mounting plate CP micro plus Round faceplate	ekey mounting plate CP micro plus Square-cut faceplate
101881	ekey mounting plate CP micro plus, r20 mm	101883 ekey mounting plate CP micro plus, e20 mm
101882	ekey mounting plate CP micro plus, r24 mm	101884 ekey mounting plate CP micro plus, e24 mm
	<ul style="list-style-type: none"> • Dimensions W x H x D: 20 (24) x 200 x 2.7 mm • ABS plastic, grained on one side, black 	<ul style="list-style-type: none"> • Required mounting plate for the CP micro plus in the door leaf

3

Adapter cable

Motorized locks from most manufacturers can be connected to the ekey control panel micro plus and the ekey cable transfer quickly and easily with the following adapter cables.



Part no.	Description
101868	ekey adapter micro plus KfV_A CTS
	<ul style="list-style-type: none"> • 8-core, length: 4100 mm • For motorized lock KfV Genius A
101869	ekey adapter micro plus KfV_B CTS
	<ul style="list-style-type: none"> • 8-core, length: 4100 mm • For motorized lock KfV Genius B
101870	ekey adapter micro plus FUHR CTS
	<ul style="list-style-type: none"> • 8-core, length: 4100 mm • For motorized lock Fuhr Multitronic/Autotronic
101871	ekey adapter micro plus ROTO A CTS
	<ul style="list-style-type: none"> • 8-core, length: 4100 mm • For motorized lock Roto Eneo A
101872	ekey adapter micro plus GU Automatic CTS
	<ul style="list-style-type: none"> • 8-core, length: 4100 mm • For motorized lock GU Security Automatic
101873	ekey adapter micro plus WH_EAV CTS
	<ul style="list-style-type: none"> • 8-core, length: 4100 mm • For motorized lock Winkhaus blueMatic EAV
101874	ekey adapter micro plus MACO CTS
	<ul style="list-style-type: none"> • 8-core, length: 4100 mm • For motorized lock MACO Z-TA COMFORT
102034	ekey adapter micro plus WH_BM CTS
	<ul style="list-style-type: none"> • 8-core, length: 440 mm • For motorized lock Winkhaus blueMotion
102087	ekey adapter micro plus ISEO E CTS
	<ul style="list-style-type: none"> • 8-core, length: 4100 mm • For motorized lock ISEO x1R Easy
102088	ekey adapter micro plus GLUTZ CTS
	<ul style="list-style-type: none"> • 8-core, length: 4100 mm • For motorized lock Glutz MINT

4

Cable transfer

8-core cable transfer



Part no.	Description	
100880	ekey CTL 48/8; cable transfer leaf side	
	<ul style="list-style-type: none"> Housing dimensions H x W x D: 478 x 24 x 17.5 mm Housing installation in the door leaf 	<ul style="list-style-type: none"> Door opening up to approx. 180° Cable length on the frame side: 2.5 m
101750	ekey CTL 48/8; cable transfer housing on the leaf side	
	<ul style="list-style-type: none"> Housing dimensions H x W x D: 478 x 24 x 17.5 mm Housing installation in the door leaf 	<ul style="list-style-type: none"> Door opening up to approx. 180° Cable length on the frame side: 4 m
101475	ekey CTL 48/8; cable transfer housing on the leaf side	
	<ul style="list-style-type: none"> Housing dimensions H x W x D: 478 x 24 x 17.5 mm Housing installation in the door leaf 	<ul style="list-style-type: none"> Door opening up to approx. 180° Cable length on the frame side: 10 m
100883	ekey CT without housing/8; cable transfer	
		<ul style="list-style-type: none"> Door opening up to approx. 180° Cable length on the frame side: 2.5 m
100885	ekey CTL 30/8; cable transfer housing on the leaf side	
	<ul style="list-style-type: none"> Housing dimensions H x W x D: 300 x 24 x 17.5 mm Housing installation in the door leaf 	<ul style="list-style-type: none"> Door opening up to approx. 100° Cable length on the frame side: 2.5 m
	<ul style="list-style-type: none"> Cable: Li9Y11Y, 8 x 0.34 mm² Cable length on the leaf side: 0.8 m, with CP35/8 connector at the end for connecting to the control panel 	

Accessories - 8-core cable transfer



Part no.	Description
100890	ekey built-in fitting set CT timber
	<ul style="list-style-type: none"> Mounting accessories for installation in timber doors
101849	ekey cable SpC, spare cable for frame side, 10 m, 8 x 0.34 mm ² , SpC/o

6-core cable transfer



Part no.	Description	
101910	ekey CTL 18/6; cable transfer with housing on the leaf side	
	<ul style="list-style-type: none"> Housing dimensions H x W x D: 180 x 20 x 26.5 mm Housing installation in the door leaf Cable length on the leaf side: 1.0 m, with CP35/8 connector at the end for connecting to the control panel 	<ul style="list-style-type: none"> Cable: LiF9Y11Y, 6 x 0.34 mm² Door opening up to approx. 180° Cable length on the frame side: 2.0 m
101561	ekey CT without housing/6; cable transfer without housing	
	<ul style="list-style-type: none"> Cable length on the leaf side: 1.0 m, with CP35/8 connector at the end for connecting to the control panel 	<ul style="list-style-type: none"> Cable: LiF9Y11Y, 6 x 0.34 mm² Door opening up to approx. 180° Cable length on the frame side: 2.0 m

Accessories - 6-core cable transfer



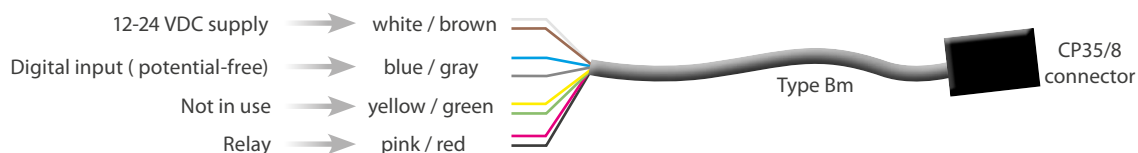
Part no.	Description
101586	ekey mounting plate CT without housing r16, round-cut faceplate, for timber door
101587	ekey mounting plate CT without housing s16, square-cut faceplate, for plastic or aluminum door
	<ul style="list-style-type: none"> • Dimensions H x W x D: 126 x 16 x 3 mm • optional mounting plate for 6-core cable transfer

Cable Bm+

Only required when not using an adapter cable.



Part no.	Description
101879	ekey cable Bm+, 0.3 m, 8 x 0.34 mm ² , CP35/WS
101880	ekey cable Bm+, 3.5 m, 8 x 0.34 mm ² , CP35/WS



Cable Bm+



Part no.	Description
101878	ekey cable Bm+, 0.3 m, 4 x 0.25 mm ² , CP35/PAP WH_BM
	<ul style="list-style-type: none"> • For ekey control panel micro plus and Winkhaus blueMotion lock
101988	ekey cable Bm+, 0.2 m, 4 x 0.25 mm ² , CP35/PAP MACO
	<ul style="list-style-type: none"> • For MACO Z-TA Comfort
102048	ekey cable Bm+, 0.3 m, 8 x 0.34 mm ² , CP35/WS
	<ul style="list-style-type: none"> • For KTV Genius A and FUHR Multitronic/Autotronic

5



Power supply



Part no.	Description
100205	ekey PS DRM 230 VAC/12 VDC/2 A; DIN-rail mounted
100891	ekey PS DRM 230 VAC/24 VDC/2 A; DIN-rail mounted
100204	ekey PS OM 230 VAC/12 VDC/2 A; outlet-mounted
101742	ekey PS OM 230 VAC/24 VDC/1.1 A; outlet-mounted

Important: Select the power supply based on the properties of the motorized lock.

Uninterruptible power supply

Part no.	Description	
101559	ekey UPS DRM 230 VAC/12 VDC/4 Ah, DIN-rail mounted	
	<ul style="list-style-type: none"> • Dimensions W x H x D: UPS: 108 x 94 x 95 mm (6HP) Battery: 157 x 93 x 66.5 mm (9HP) • Supply voltage: 100-240 VAC • 2 parts: UPS (switched-mode power supply) and battery • Output voltage, output current: 12 VDC/5 A 	<ul style="list-style-type: none"> • Temperature range: -10 °C to 40 °C • Function display: LED • Advantage: Replaces the power supply device; ensures a reliable supply of current to the system for several hours. Suitable for use in conjunction with a motorized lock.
101593	ekey UPS DRM 230 VAC/24 VDC/4 Ah, DIN-rail mounted	
	<ul style="list-style-type: none"> • Dimensions W x H x D: UPS: 108 x 94 x 95 mm (6HP) Battery: 157 x 93 x 66.5 mm (9HP) • Supply voltage: 100-240 VAC • 3 parts: UPS (switched-mode power supply) and 2 batteries • Output voltage, output current: 24 VDC/3 A 	<ul style="list-style-type: none"> • Temperature range: -10 °C to 40 °C • Function display: LED • Advantage: Replaces the power supply device; ensures a reliable supply of current to the system for several hours. Suitable for use in conjunction with a motorized lock.

! Important: Select the power supply based on the properties of the motorized lock.

Catalogs and folders

ekey downloads

ekey MEDIA CENTER

You can find all the information on our products on our website at www.ekey.net/en/pro-mediacenter





Austria (headquarters)
ekey biometric systems GmbH
Lunzerstraße 89
A-4030 Linz
T: +43 732 890 500 - 0
E: office@ekey.net

Germany
ekey biometric systems Deutschland GmbH
Industriestraße 10
D-61118 Bad Vilbel
T: +49 6187 90696 - 0
E: office@ekey.net

Switzerland & Liechtenstein
ekey biometric systems Est.
Landstrasse 79
FL-9490 Vaduz
T: +41 71 560 5480
E: office@ekey.ch

Adriatic East region
ekey biometric systems d.o.o.
Vodovodna cesta 99
SI-1000 Ljubljana
T: +386 1 530 94 89
E: info@ekey.si

Italy
ekey biometric systems Srl.
Via Copernico 13/A
I-39100 Bolzano
T: +39 0471 922712
E: italia@ekey.net

www.ekey.net

ekey biometric systems



ekey MEDIA CENTER

You can find all the information on our
products on our website at
www.ekey.net/en/pro-mediacenter

